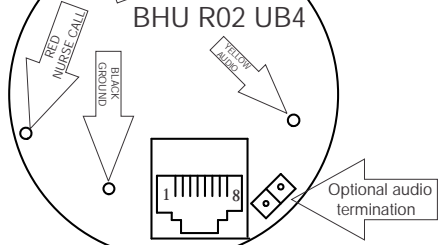


MICRO NURSECALL SYSTEMS

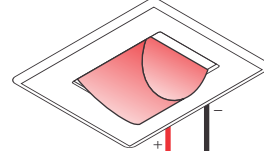
UB-4 NURSE CALL SYSTEM WIRING

UB-4 BED UNIT
(BHU R02 Ub4)

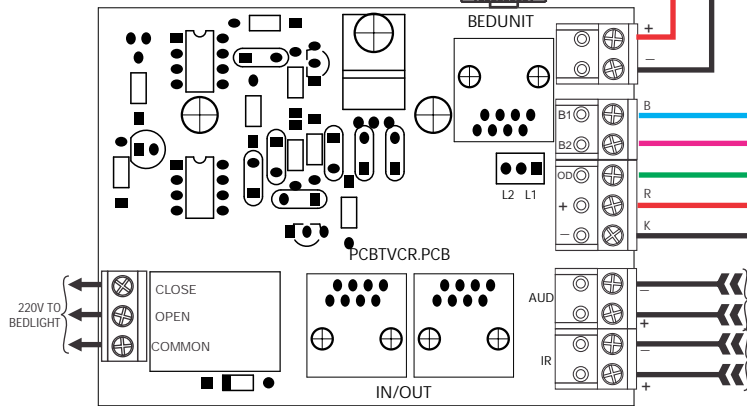


- 1 = BLUE = LAMP LEAD
- 2 = BLUE/W = EMERG. LEAD
- 3 = ORANGE = AUDIO
- 4 = ORANGE/W = 485 DATA(B)
- 5 = GREEN = 485 DATA(A)
- 6 = GREEN/W = NEG
- 7 = BROWN = OVERDOOR
- 8 = BROWN/W = +24V DC

OVERDOOR LIGHT
(MNSODL)



PCB-TVC-R
CONNECTOR BOARD



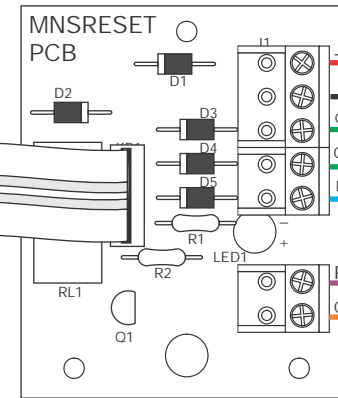
- 1 = BLUE = LAMP LEAD BED 1
- 2 = BLUE/W = LAMP LEAD BED 2
- 3 = ORANGE = LAMP LEAD BATH 1
- 4 = ORANGE/W = LAMP LEAD BATH 2
- 5 = GREEN = EMERGENCY LEAD
- 6 = GREEN/W = OVERDOOR
- 7 = BROWN = +24V DC
- 8 = BROWN/W = NEG GND

UTP CABLE FROM
DUTY STATION

LOOP TO NEXT PCB-TVC-R
(IF THERE IS A 2nd BED)

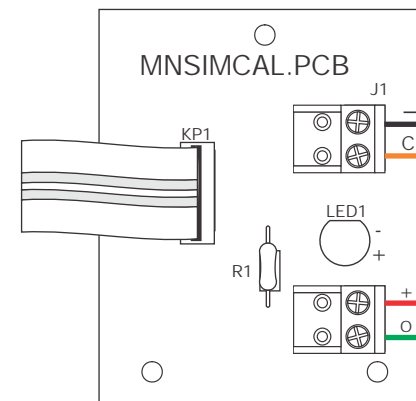
8 CORE COMMS

TO 2ND RESET UNIT
(IF THERE IS A 2nd BATHROOM)



RESET UNIT
(M04)

REMOTE RESET



IMPULSE CALL UNIT
(M03)

LEGEND

Black	K
White	W
Blue	B
Blue/White	B/W
Red	R
Green	G
Green/White	G/W
Brown	N
Brown/White	N/W
Yellow	Y
Orange	O
Orange/White	O/W
Violet	V